



“VIEWING AVAILABLE LOADS” INSTRUCTIONS

To Login to RWI Transportation Load Board, please go to www.rwitrans.com and click on the ‘Carrier’ dropdown and select ‘Find a Load’. From here, you can view available loads, update current position of truck, or input arrival/departure times of your loads.

To view RWI’s Available Loads:

- 1) Click on the ‘Carrier’ dropdown and select ‘Find a Load’. Click ‘Find a Load’.
- 2) You will be prompted to enter your username and password (*If you are not sure of your username, please contact us at crrwi@rwitrans.com or by calling us at 859-442-4721 or 859-442-4742*). *If this is your 1st time logging into the site, you will be prompted for some required information upon login. Once you fill in the required fields, you will be asked for 2 security questions in the event you forget your password. These are required to complete as well.*
- 3) Click on ‘Carrier Hub’.
- 4) You can view our entire load list by clicking Available Loads under the CarrierHub section on the left hand side of your screen.
- 5) If you prefer to narrow your search, we have 3 other search criteria you can select. You can view by **Map**, by **Radius Search**, or by **State to State**.

MAP SEARCH

The screenshot displays the RWI Transportation CarrierHub interface. The main window is titled 'Map Search' and features a map of the United States with state abbreviations. The 'Origin' dropdown is set to 'CA, NV' and the 'Destination' dropdown is set to 'OR, KY'. The 'Map Search' button is highlighted. The interface also includes a navigation menu on the left with options like 'Available Loads', 'Load Search', and 'Load Bidding'. The bottom of the window shows the Windows taskbar with the time 7:58 AM on 6/7/2011.

- a) To view by Map, Under the Load Search section on the left hand side of your screen, click ‘Map Search’.

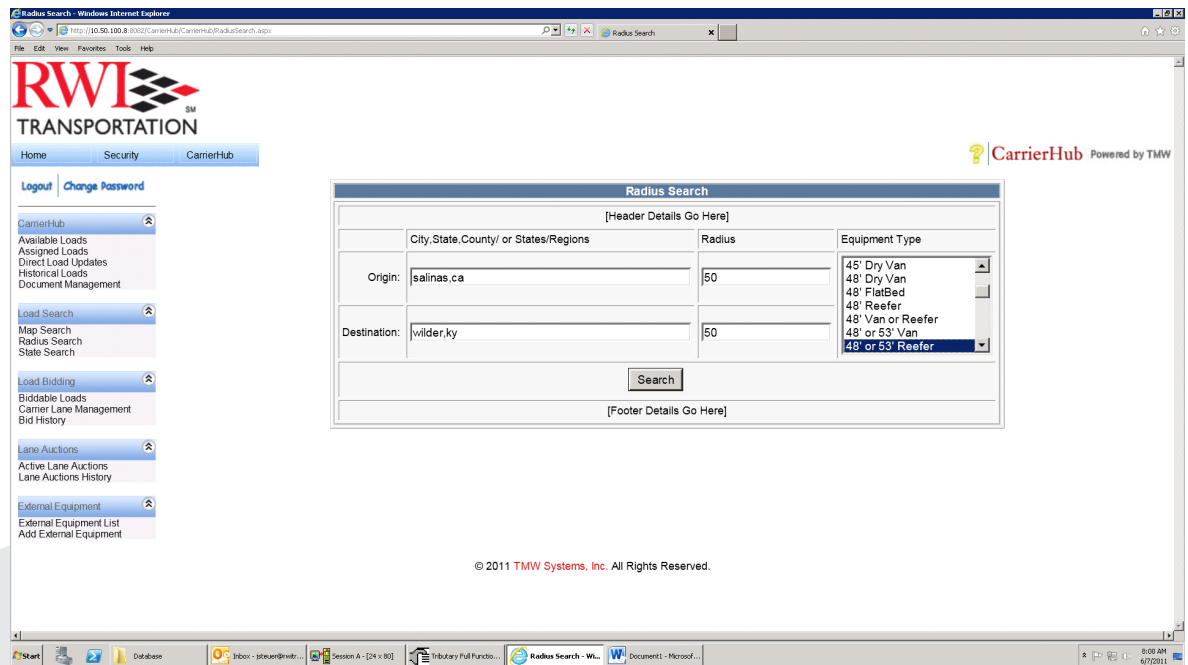


LOAD BOARD INSTRUCTIONS CONTINUED

MAP SEARCH (cont.)

- b) You can highlight one or more states to select in the Origin Column and one or more in the Destination Column.
- c) Click **'Search'** and the results will pull in per your criteria you selected.

RADIUS SEARCH

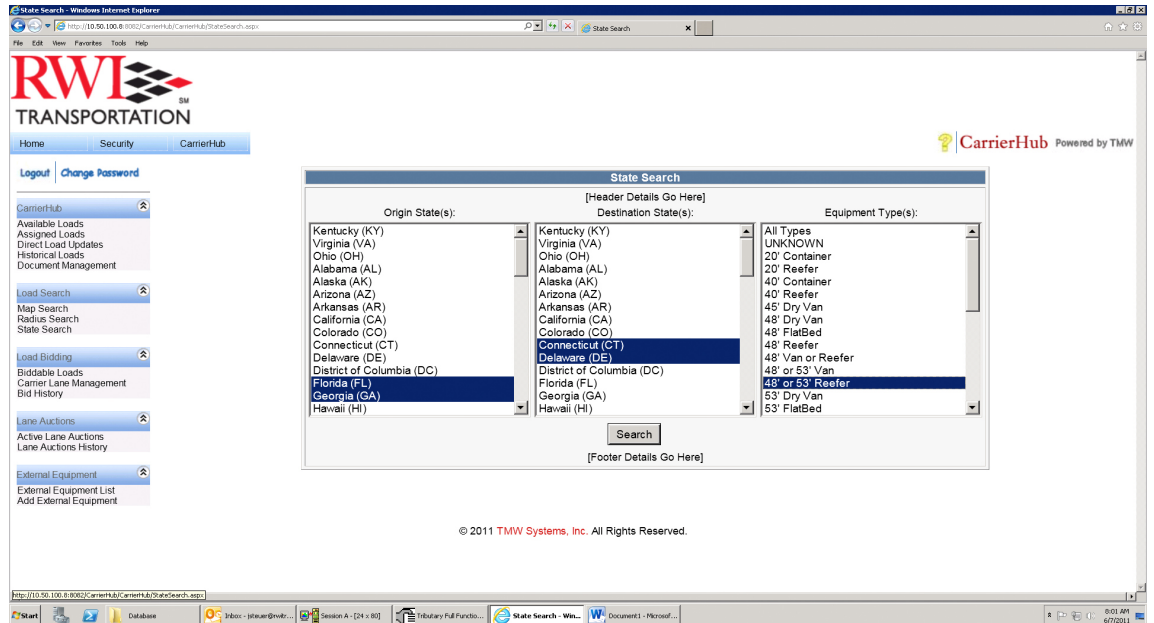


- a) To view by Radius, Under the Load Search section on the left hand side of your screen, click **'Radius Search'**.
- b) Input the origin city, state abbreviation, then the mileage radius you would like to extend to.
- c) Do the same for destination by selecting the city, state abbreviation, then the mileage radius.
- d) Under the Equipment Type box, select one or more equipment (to select more than 1, click & hold the CTRL key and then highlight more).
- e) Click **'Search'** and the results will pull in per your criteria you selected.



LOAD BOARD INSTRUCTIONS CONTINUED

STATE TO STATE



- To view by State to State, Under the Load Search section on the left hand side of your screen, click **'State Search'** (to select more than 1, click & hold the CTRL key and then highlight more).
- Highlight one or more states under the Origin section and one or more states under the Destination section (to select more than 1, click & hold the CTRL key and then highlight more).
- Under the Equipment Type box, select one or more equipment (to select more than 1, click & hold the CTRL key and then highlight more).
- Click **'Search'** and the results will pull in per your criteria you selected.

NOTE: If at any time, you would like to see instructions for the page that you are on to guide you thru any process, just click on the yellow question mark.

